

Retail

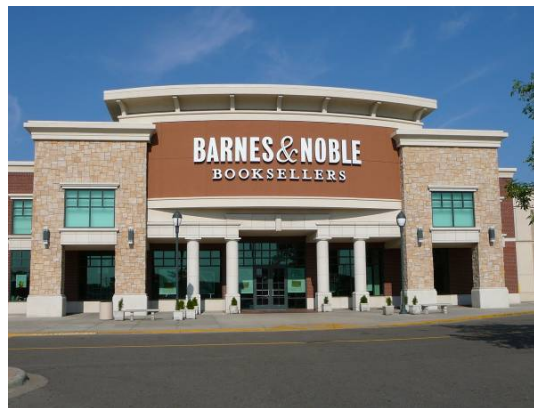
Target: Over the past ten years, we have partnered with several architects on over 800 **Target Stores** throughout the United States and Canada. These projects have been a combination of new stores and remodels to existing stores.



Many of the stores follow one of the standard prototype designs, some have used a modified prototype and a few have utilized a unique design to meet the locations individual requirements.



Barnes and Noble:



The **Barnes & Noble Book Stores** at the Ridgehaven Mall in Minnetonka, MN and Maplewood Mall in Maplewood, MN underwent major renovations and additions.

Each store required a total interior remodel with many structurally challenging modifications. An updated façade with a new entry created a dramatic and inviting

exterior appearance.

Cabela's: Over the past 14 years, we have partnered with several architects on 18 **Cabela's stores** throughout the United States. These projects include both new full stores as well as remodels and upgrades to existing stores.

Cabela's stores are unique in that they have a large log canopy entrance, and interior features of live fish areas and wildlife mounts.



Retail

Studio Movie Grill: ERA is providing the structural engineering services for the rebranding of an existing 57,260 SF movie theater as a “**Studio Movie Grill.**” This particular one is located in **Indianapolis, Indiana.** The structure itself is one story with an anticipated mezzanine accessing each theater.



The Indianapolis location is expected to be complete in 2013. Studio Movie Grill is currently planning a national rollout and anticipates expansion of over 200 facilities in 2014 and 2015.

Bridgewater Falls:



Bridgewater Falls which is located in Fairfield, Ohio is a 550,000 square foot, 60-acre development with two power centers and a central retail village that features a plaza and European-style development. The site is marked by a bridge-entry and signature architectural detailing. Construction was completed in 2006.

Plymouth Marketplace:



Plymouth Marketplace consists of a 40,000 square foot Lunds Marketplace, high-quality grocer, two in-line retail buildings of 12,000 and 29,000 square feet and a freestanding, 5,200 square foot restaurant.

The project garnered two STARR Awards from the Minnesota Shopping Center Association; one for the overall real estate development and one for design of the Lunds Marketplace store. Lunds is the visual anchor of the development with architectural elements such as building corners highlighted by raised parapets, large cornices, brick piers, and recessed storefront.

Retail

Camping World: ERA has provided the structural design for over twenty **Camping World Stores** throughout the United States. The buildings have ranged in sized from 21,000 square feet to 43,000 square feet. These buildings are designed to accommodate retail, sales, parts and service areas with up to seven RV service bays.

These projects have been both new construction and remodels of existing structures.

